

# WHAT ARE THE RULES?

The traffic in Copenhagen Harbour is diverse. There are harbour buses, tour boats etc. alongside recreational sailors, kayaks and rowing boats - and new types of users are constantly emerging. That is why there are a number of rules for sailing in the harbour.

- **The speed limit in the Main Course is 6 knots**, and 4 knots in all side channels and basins. South of Jernbanebroen, the limit is 5 knots
- **Sailing in the commercial port** is reserved for commercial traffic
- **See the special rules regarding Lynetteholm's working site** on the opposite side of this flyer
- **Between Nordre Toldbod and the Sluice** sailing with sails is not permitted, so yachts must either use motor or be towed. However, this does not apply in Teglværkshavnen within Teglværksbroen, where sailing with sailing dinghies is permitted.
- **All sailing in the proximity of Langelinie** must take place east of the special yellow marks
- **See the map with all the rules and bridge heights** on [byoghavn.dk/sejlads-og-motorbaade](http://byoghavn.dk/sejlads-og-motorbaade) (In Danish)

## LOCAL WEATHER STATION AT THE SLUICE GATES

Plan your trip through the Sluice Gates using the weather station which displays weather and water data.

[Byoghavn.dk/vejrstation](http://Byoghavn.dk/vejrstation)



# MOTOR & SAIL BOATS COPENHAGEN HARBOUR

BY&HAVN

# MORE INFO ABOUT THE HARBOUR

Visit the CPH City & Port Development website for more information about sailing in the harbour. (In Danish)



[byoghavn.dk/sejlads-og-motorbaade](https://byoghavn.dk/sejlads-og-motorbaade)

You can also subscribe to the newsletter and receive news about the harbour in your inbox. (In Danish)



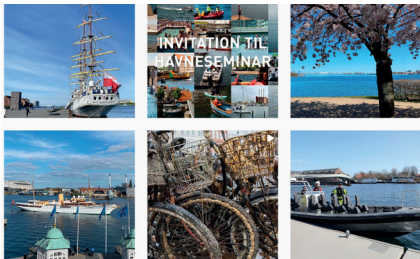
[byoghavn.dk/nyheder-om-havnen](https://byoghavn.dk/nyheder-om-havnen)

# THE HARBOUR IS ON INSTAGRAM

## THE CITY'S HARBOUR

We love life in the harbour 📍🚤. We provide inspiration for activities, 🏆👥 organise competitions and give talks about the use and development of the harbour. Take your 📷 med #voreshavn

[byoghavn.dk/byenshavn](https://byoghavn.dk/byenshavn)



[Instagram.com /byenshavn](https://www.instagram.com/byenshavn)

# FURTHER INFORMATION



Read the short version of the current harbour regulations on [byoghavn.dk/pixi-havnereglement](https://byoghavn.dk/pixi-havnereglement) (In Danish)

# LYNETTEHOLM

Will you be sailing to and from Copenhagen Harbour from the north this summer? Then remember:

- That the construction of Lynetteholm has begun in the northern part of Copenhagen Harbour east of Trekroner
- That working sites have been set up in several of the harbour's water areas
- That yellow buoys with crosses indicate working sites and work vessels
- That unauthorised sailing is not permitted in the working sites
- To take care of yourself and the staff working on the water. It is **important** to read more on [byoghavn.dk/havnen/lynetteholm-sikkerhed-for-sejlere](https://byoghavn.dk/havnen/lynetteholm-sikkerhed-for-sejlere) (In Danish, German and English)



## THE SLUICE

See opening hours for the Sluice on [byoghavn.dk/slusen](https://byoghavn.dk/slusen) (In Danish)



## BRIDGE OPENING

Having one of the ten bridges in Copenhagen Harbour opened during the day is free, but at night there is a fee. You must book the bridge opening in advance, because the bridge towers are not permanently staffed.



[kk.dk/saadan-far-du-abnet-en-bro](https://kk.dk/saadan-far-du-abnet-en-bro) (In Danish)

## ENVIRONMENTAL STATION

Toilet tanks and oily water can be emptied at the Copenhagen Harbour Environmental Station at the end of Lautrupkaj.

## GUEST BERTHS

It is possible to moor as a guest at several sites in Copenhagen Harbour.

To find out more about guest berths in the harbour, visit

[byoghavn.dk/gaestesejlere](https://byoghavn.dk/gaestesejlere) (In Danish)

